

STANDARD DEPARTURE CHART
INSTRUMENT (SID) - ICAO

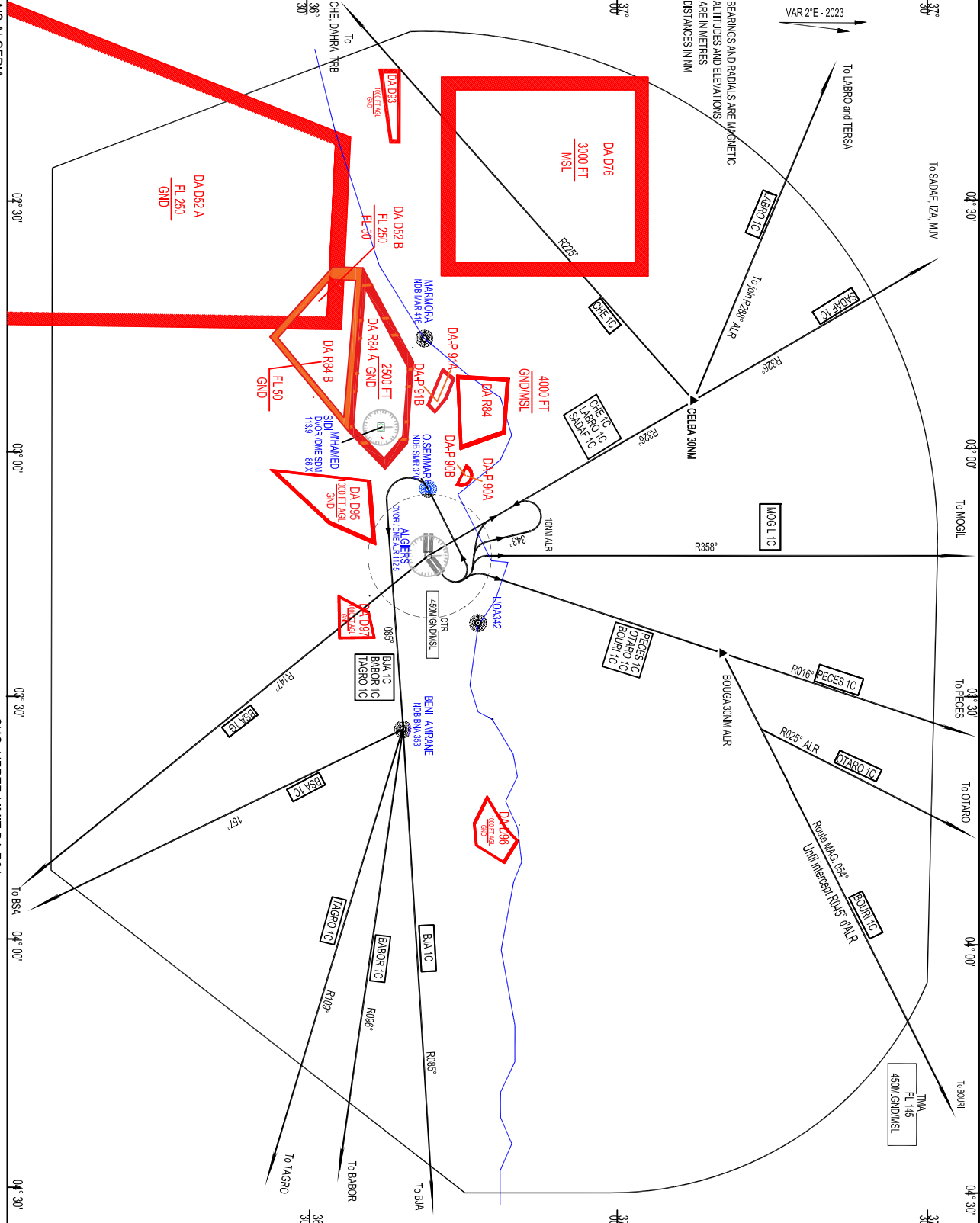
TRANSITION ALTITUDE
1200 m

TOR: 118.7 - 119.7 (h)
APP: 121.4

RWY 05

CHANGES: Modification of departures procedures.

VAR 2°E - 2023
BEARINGS AND RADIALS ARE MAGNETIC
ALTITUDES AND ELEVATIONS
ARE IN METRES
DISTANCES IN NM



ALGERS TMA
DEPARTURES PROCEDURES - ALGERS HOUARI BOUMEDIENE
RWY 05

CODE	EXIT POINT	PATHS
MOGL IC		After Take-off turn left, intercept and follow R358° ALR to MOGL.
PECES IC		After Take-off turn left, intercept and follow R016° ALR to PECES then MHL.
OTARO IC		After Take-off turn left, intercept and follow R016° ALR to BOUGA (30NM ALR) then right to join R025° ALR to OTARO.
BOUJRL IC		After Take-off turn left, intercept and follow R016° ALR at BOUGA (30NM ALR) then right to join R045° ALR to BOUJRL.
BJA IC		After Take-off turn left, and proceed to SMR, pass on SMR FL 40 minimum then turn left, to intercept and follow R085° SDM to BNA, pass BNA FL 70 minimum, then route to BJA.
BABOR IC		After Take-off turn left, and proceed to SMR, pass on SMR FL 40 minimum then turn left, to intercept and follow R085° SDM to BNA FL 70 minimum, then route to BABOR.
TAGRO IC		After Take-off turn left, and proceed to SMR, pass on SMR FL 40 minimum then turn left, to intercept and follow R085° SDM to BNA FL 70 minimum, then route to TAGRO.
BSA IC		After Take-off turn left, and proceed to SMR, pass on SMR FL 40 minimum then turn left, to intercept and follow R085° SDM to BNA FL 70 minimum, then route to BSA.
BSA IG		After Take-off, turn left, intercept and follow R343° ALR, at 10NM turn left to back on R328° to ALR, pass ALR FL 70 minimum then join R147° ALR to BSA.
CHE IC		After Take-off turn left, intercept and follow R328° ALR at CEIBA (30NM ALR) turn left on CHE to DAHRA or TRB.
LABRO IC		After Take-off turn left, intercept and follow R328° ALR at CEIBA (30NM ALR) turn left to join R288° ALR to TERESA then LABRO.
SAOU IC		After Take-off turn left, intercept and follow R328° ALR then route to SDAUF then IZA or MLY.

AIS ALGERIA

CHG :UPPER LIMIT DA R84

AIRAC AMDT 05/25